

High Pressure Airline Filters

HHGO US Series

HHGO US 60 / 175 / 350 / 500 / 700 / 950 / 1500 / 1750

hertz[®]
KOMPRESSOREN



Filters

The compressed air coming from the compressor may contain unwanted elements such as oil, dust and humidity. The air in the external environment will also affect the quality of the final product. This air must be filtered prior to the final stage of production.

High Pressure Line Filters Features

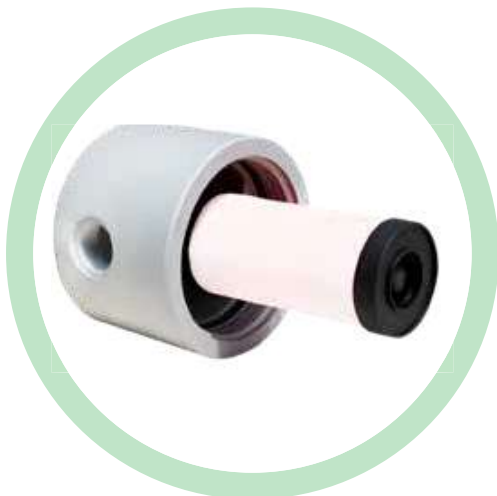
Hertz manufactures a line of High Performance Compressed Air Filters, Moisture Separators in two different range;

1)725 psi Range made of Aluminum, No welding, strong and reliable design.

2)5076 psi Range made of Steel. No welding, and very reliable for High Pressure applications.

Anodized Aluminum Design with High Performance

Hertz High Pressure Range Compressed Air Filters are no welded design. As a result it is very strong and robust. Very thick wall thickness and In-house high pressure test facilities assure the performance. All inner and outer surfaces of 725 psi Aluminum design Filters are anodized, where 5076 psi Carbon Steel design Filters are epoxy electro powder painted.



SPECIFICATIONS

Model	Capacity		Connection Size	Max. Working Pressure	Element Model	Housing Dimensions (in.)			
	m ³ /min	cfm		psi		A	B	C	D
HHGO US 60	1.70	60	1/4" NPT	725	HH25	4.17	4.68	1.18	3.46
HHGO US 175	4.96	175	1/2" NPT	725	HH50	4.17	4.68	1.18	3.46
HHGO US 350	9.91	350	3/4" NPT	725	HH100	4.17	4.68	1.18	3.46
HHGO US 500	14.2	500	1" NPT	725	HH150	4.84	5.51	1.55	4
HHGO US 700	19.8	700	1" NPT	725	HH200	4.84	5.51	1.55	4
HHGO US 950	26.9	950	1 1/2" NPT	725	HH250	4.84	5.51	1.55	4
HHGO US 1500	42.5	1500	2" NPT	725	HH2500	6.25	7	2.20	5.23
HHGO US 1750	49.6	1750	2 1/2" NPT	725	HH3000	6.25	7	2.20	5.23

* HERTZ KOMPRESSOREN reserves its rights to change the specifications without any prior notice.

Specifications	Pre Filtering	General Purpose	Oil Removal	Activated Carbon
Grade	P	X	Y	A
Particle Removal (Micron)	5	1	0.01	0.01
Max. Oil carryover at 70 °F (mg/m ³)	5	0.5	0.01	0.003
Max. working pressure (psi)* / *5075 psi is an option	725	725	725	725
Max. working temperature (°F)	176	176	176	77
Initial pressure loss (psi)	0.58	1.16	1.45	1.6
Pressure loss for element change (psi)	10.15	10.15	10.15	10.15
Element colour code	WHITE	WHITE	WHITE	METAL SS

NOTES

- 1) Grade A must not operate in oil saturated conditions.
- 2) Grade A elements should be replaced periodically to suit the applications but must be changed at least every six months.
- 3) Grade A will not remove certain gases including carbon monoxide and carbon dioxide. Please refer to works if in doubt.
- 4) All filters are suitable for use with mineral and synthetic oils.
- 5) The above housings require only one filter element.
- 6) Direction of air flow, inside to out, through filter element. Except grade A
- 7) Manual drain is standard. Electronic timer is optional.

ORDERING

The complete filter model number contains the size and grade, Example - 1/4" general purpose filter model HHGO US 60 MX with replacement filter element model M 25 X.

DRAIN TYPE

Manual with steel

