



## PET MASTER OIL-FREE RECIPROCATING COMPRESSORS



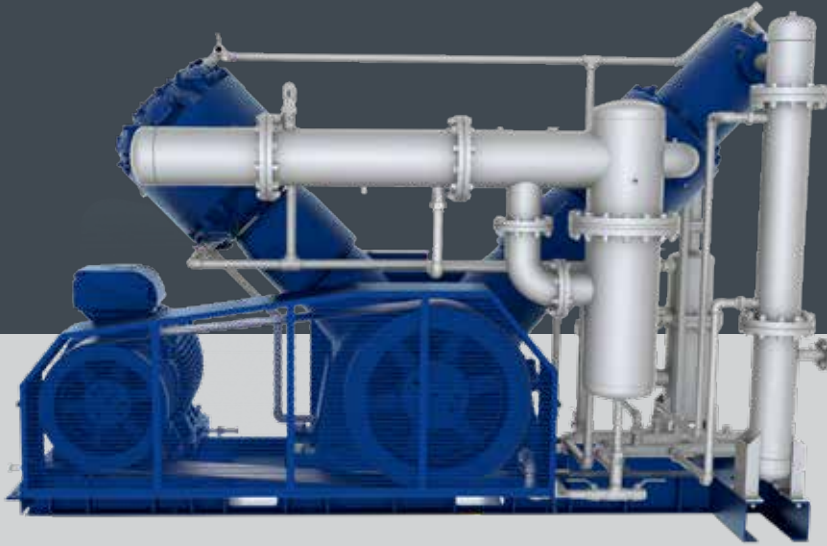
### STANDARD EQUIPMENT

High quality components such as IP55 electric motors with the IE3 efficiency class, star-delta motor starter system, electrical materials selected according to IEC, UL/cUL, CE standards as per the market requirements, durable compressor blocks are provided as standard in all our products.



### ADVANTAGES

HERTZ PET MASTER Series are reliable and high performance oil free reciprocating air compressors used in the pet bottling, food and health industries. Pet Master Compressors provide 100% oil-free pressurized air as no oil is used in the compression chamber. They operate between 0 and 40 Bar. As they have an integrated structure, they occupy less space and provide ease of installation.



## MAIN MOTOR AND DRIVE SYSTEM

- High efficiency 460V/3 phase/60Hz IE3 IP55 electric motor
- Special loadless start system and automatic discharge system for loadless start



## CONTROLLER\*

- Advanced, high-definition, userfriendly 7" color touchscreen
- High speed, industrial type PLC infrastructure with robust construction
- Encrypted Access Protection system with various levels of authorization.
- Display of relevant data on the screen clearly, trend graph recording and active monitoring
- Alarm History Record for the last 100 alarms
- Ethernet / ModBus communication functions as standard
- Remote monitoring and control feature /
- Compliance with GSM, internet and Industry 4.0
- Flexible programmable/expandable Input /Output structure



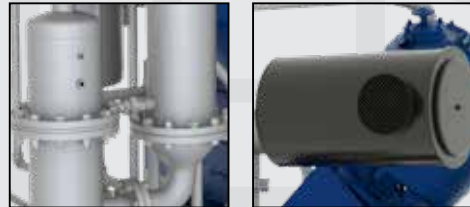


## PET MASTER Oil-Free Reciprocating Compressors

HERTZ PET MASTER Series are reliable and high performance oil free reciprocating air compressors used in the pet bottle blowing, food and health industries.

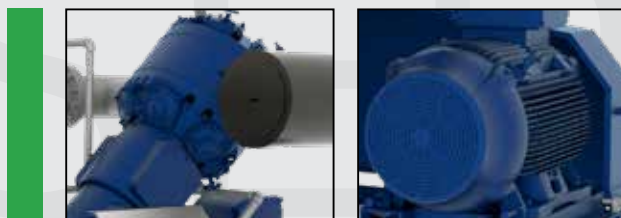
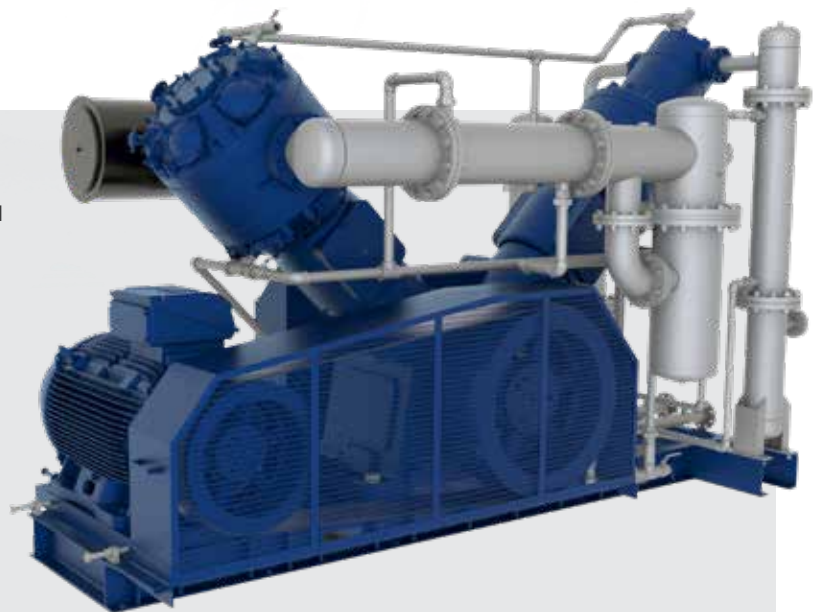
### ADVANTAGES

- Pet Master Compressors provide 100% oil-free pressurized air as no oil is used in the compression chamber.
- They operate between 0 and 40 Bar. As they have an integrated structure, they occupy less space and provide ease of installation and installation.



### GENERAL SPECIFICATION

- For intercoolers and aftercoolers, stainless steel pipe is used which is more efficient in terms of heat transfer and more resistant to corrosion.
- The structure of the coolers is designed to transfer air through the pipe and water through the body wall. Thanks to their compact design, pipe-type coolers are easy-to-maintain and their cooling efficiency is high.
- Compressor provides energy saving by operating with Load / Unload control system within maximum and minimum pressure set values determined according to system requirements.
- The integrated electrical system provides user-friendly operation.



## CONTROLLER

- Advanced, high-definition, user friendly 7" color touchscreen
- High speed, industrial type PLC infrastructure with robust construction
- Encrypted Access Protection system with various levels of authorization.
- Display of relevant data on the screen clearly, trend graph recording and active monitoring
- Alarm History Record for the last 100 alarms
- Ethernet / ModBus communication functions as standard
- Remote monitoring and control feature / Compliance with GSM, internet and Industry 4.0
- Flexible programmable/expandable Input /Output structure



## TECHNICAL DATA

| Model          | Pressure |     | Capacity (F.A.D)    |     | Motor Power<br>kW/HP | Connection Size | Dimensions (in.) |       |        | Weight<br>lbs |
|----------------|----------|-----|---------------------|-----|----------------------|-----------------|------------------|-------|--------|---------------|
|                | bar      | psi | m <sup>3</sup> /min | cfm |                      |                 | Length           | Width | Height |               |
| PET MASTER 50  | 40       | 580 | 3.6                 | 127 | 37/50                | 1 1/4" NPT      | 143.6            | 65.7  | 94.3   | 12125         |
| PET MASTER 75  | 40       | 580 | 5.5                 | 194 | 55/75                | 1 1/4" NPT      | 143.6            | 65.7  | 94.3   | 12125         |
| PET MASTER 100 | 40       | 580 | 7.4                 | 261 | 75/100               | 1 1/4" NPT      | 144.6            | 68.7  | 97.2   | 14330         |
| PET MASTER 125 | 40       | 580 | 9.10                | 321 | 90/125               | 1 1/4" NPT      | 144.6            | 68.7  | 97.2   | 14330         |
| PET MASTER 150 | 40       | 580 | 11.6                | 410 | 110/150              | 2" NPT          | 165.0            | 77.8  | 110.8  | 16535         |
| PET MASTER 180 | 40       | 580 | 13.5                | 477 | 132/180              | 2" NPT          | 165.0            | 77.8  | 110.8  | 16535         |
| PET MASTER 220 | 40       | 580 | 16.4                | 579 | 160/220              | 2" NPT          | 165.0            | 77.8  | 110.8  | 17196         |
| PET MASTER 270 | 40       | 580 | 21.3                | 752 | 200/270              | 2" NPT          | 166.7            | 86.7  | 111.9  | 20283         |
| PET MASTER 300 | 40       | 580 | 23.0                | 812 | 220/300              | 2" NPT          | 166.7            | 86.7  | 111.9  | 20283         |

| Model              | Pressure |     | Capacity (F.A.D)    |     |                     |     | Motor Power<br>kW/HP | Connection Size | Dimensions (in.) |       |        | Weight<br>lbs |
|--------------------|----------|-----|---------------------|-----|---------------------|-----|----------------------|-----------------|------------------|-------|--------|---------------|
|                    |          |     | Minimum             |     | Maximum             |     |                      |                 | Length           | Width | Height |               |
|                    | bar      | psi | m <sup>3</sup> /min | cfm | m <sup>3</sup> /min | cfm |                      |                 |                  |       |        |               |
| PET MASTER 75 VSD  | 40       | 580 | 4.1                 | 145 | 5.5                 | 194 | 55/75                | 1 1/4" NPT      | 139.1            | 71.3  | 94.6   | 12346         |
| PET MASTER 125 VSD | 40       | 580 | 6.8                 | 240 | 9.10                | 321 | 90/125               | 1 1/4" NPT      | 139.8            | 71.3  | 95.7   | 14661         |
| PET MASTER 180 VSD | 40       | 580 | 10.1                | 357 | 13.5                | 477 | 132/180              | 2" NPT          | 164.1            | 77.8  | 110.8  | 17086         |
| PET MASTER 220 VSD | 40       | 580 | 12.3                | 434 | 16.4                | 579 | 160/220              | 2" NPT          | 164.1            | 77.8  | 110.8  | 17637         |
| PET MASTER 300 VSD | 40       | 580 | 17.3                | 611 | 23.0                | 812 | 220/300              | 2" NPT          | 166.3            | 87.1  | 111.8  | 20944         |

- HERTZ KOMPRESSOREN reserves its rights to make changes in its products and specifications without prior notice.

