



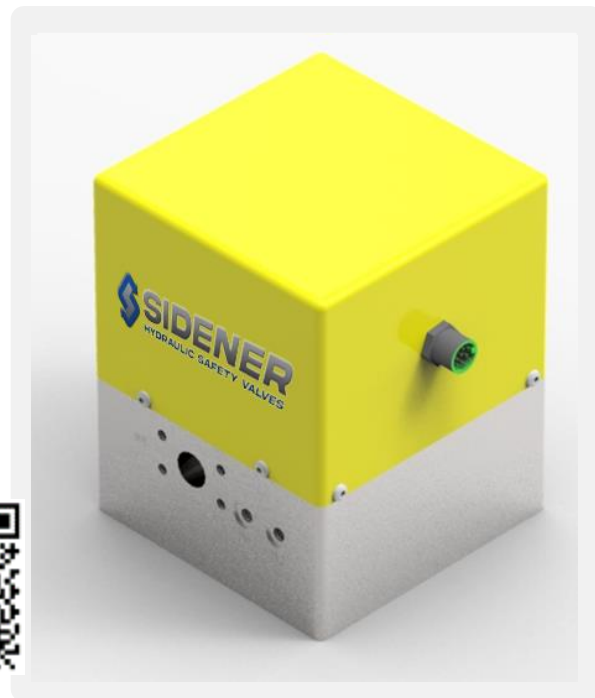
# SIDENER

## HYDRAULIC SAFETY VALVES

### CRBL-40 Specification Sheet

Sidener's Blocking Valve functions as a two position 2-way hydraulic valve with redundant valving elements and redundant monitoring.

- ◇ The purpose of the valve is to block flow in a hydraulic system.
- ◇ A common application is to block flow in a hydraulic cylinder to inhibit cylinder movement caused by gravity.
- ◇ Safety Rated Monitoring Switches indicate the movement of the redundant valving elements. Operation of the Safety Rated Monitoring Switches is typically monitored by a Safety Relay or a Safety PLC supplied by others.



**Control Reliable Hydraulic Safety Valves are TUV Certified!**



SIL/PL Capability  
www.tuv.com  
ID 0600000000

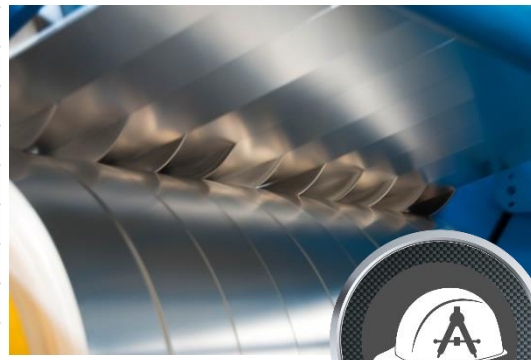


Scan Code above to View TUV certification Details

## Specifications

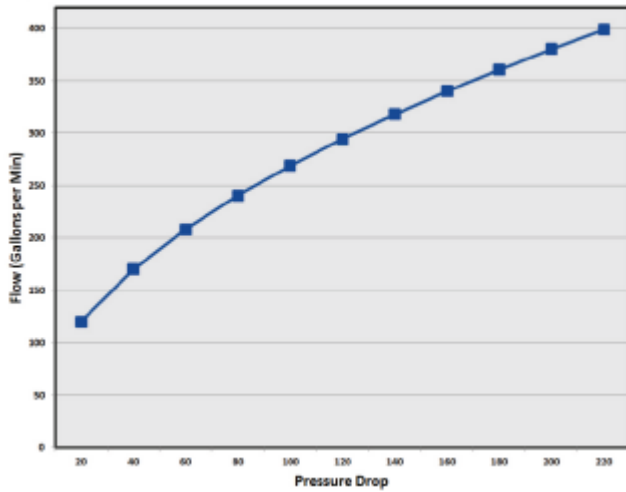
Maximum Rated Pressure	Steel: 5000PSI / Aluminum: 3000PSI
Minimum Operating Voltage	85% of Rated Voltage at 72F
Amps Draw	24VDC-2.35Amps / 115VAC-0.52Amps
Duty Cycle	Continuous at 100% Voltage
Response Time	.070 - .150 seconds at 1000PSI
Operating Temperature	-50F to +200F
Fluid Compatibility	Mineral Based or Synthetic Fluids
Recommended Viscosity	45 to 2000 SSU (6 to 420 cST)
Filtration	ISO Code 18/16/13 or better
Approximate Weight	Ductile - 200 pounds Aluminum - 85 pounds
Mounting Orientation	Any

**Contact us for Additional Assistance!**

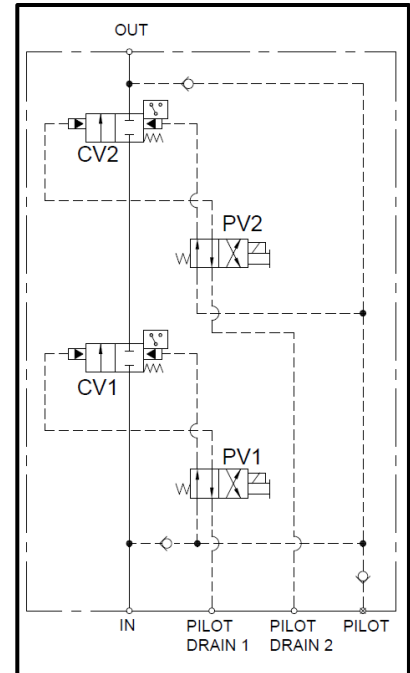


# CRBL-40 Specification Sheet

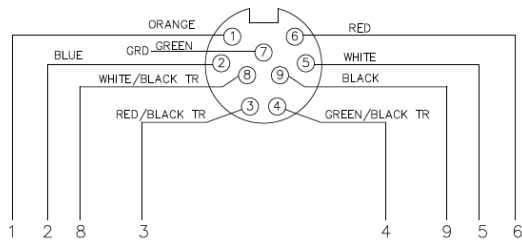
## Flow/Performance Curve



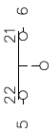
## Simplified CRBL Circuit



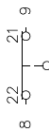
## Drawings



SWITCH SAFETY CV1



SWITCH SAFETY CV2



○ GRD

ORANGE +24 VDC Pin #1

Blue 0 VDC Pin #2

RED/BLACK TR +24 VDC Pin #3

GREEN/BLACK TR 0 VDC Pin #4

3A

3B

PILOT VALVES



Installation Drawings  
Available Upon Request

Exotic Automation & Supply  
53500 Grand River Ave  
New Hudson, MI 48165  
(248) 477-2122  
[sales@erpc.com](mailto:sales@erpc.com)

