



Gasket Tape Series 1000



Overview

Contain Aggressive Media, Protect Glass-Lined-Steel Equipment, Reduce Emissions

GLASS-LINED-STEEL SEALING CHALLENGES

Glass-lined steel equipment is used by chemical processors to deal with aggressive media under demanding conditions. Yet the inherent demands of such systems – high temperatures, alternating system pressures, limited gasket loads and deviation of sealing surfaces – can make it challenging to maintain a tight, lasting seal.

While the Polytetrafluoroethylene (PTFE) material itself offers good chemical resistance, it does not readily conform to flange surface deviations, nor does it resist creep particularly well under low gasket loads. Incorporating compressible materials or fillers into common envelope gaskets or filled PTFE gaskets, offers only a partial solution.



Sealing challenges are even greater when gaskets for large flanges (\geq DN 600/ASME 24") are fabricated offsite. This often results in long lead times, as well as shipping, handling and inventory challenges.

These, along with time-consuming and complex installation procedures, can complicate turnarounds or delay start-ups.

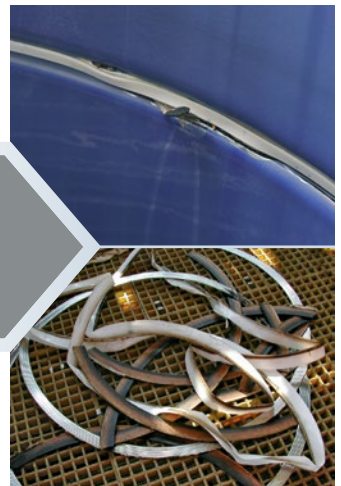
... AND THE CONSEQUENCES OF FAILURE

Any of the mentioned approaches especially if they involve inconsistent quality across different gasket brands or product lines may lead to premature gasket failure, with consequences that range from problematic to catastrophic, including:

- Leakage/emissions
- Equipment corrosion/damage
- Production downtime
- Cost increase
- Risks to personnel safety



Common envelope gaskets



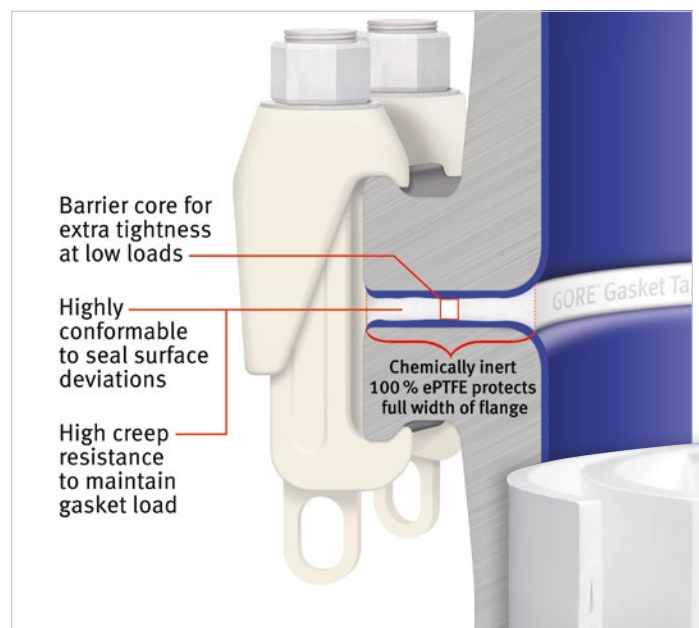
GORE® GASKET TAPE SERIES 1000 ADDRESSES ALL THE CHALLENGES OF RELIABLY SEALING LARGE GLASS-LINED-STEEL FLANGES.

Made of 100 % expanded PTFE (ePTFE), this highly conformable tape is chemically inert, and highly resistant to creep, cold flow and clamp-force loss. Its proprietary barrier core maintains an extra tight seal even at low loads.



Endorsed by De Dietrich, a leading manufacturer of glass-lined steel equipment, Series 1000 is optimized for processes utilizing highly aggressive media, as in chemical processing (e.g. specialty chemicals, agricultural products, polymers),

mining and minerals. Series 1000 is designed for use in large (\geq DN 600/ASME 24") or non-standard flanges typical of columns, mixer vessels, reactors, storage and receiver tanks.





Gasket Tape Series 1000

A HIGHER-PERFORMANCE SEALING SOLUTION

Unique barrier core technology

- Barrier core engineered to amplify the available load.
- Seals more than 10 times tighter than other ePTFE gasket tapes.

Outstanding conformability to deviations

- Seals deviations even at low gasket stress.
- Easily passes the bubble test, for trouble-free mechanical completion (MC) or start-up.

Optimal form for easy handling

- Gasket can be customized on-site.
- No fabrication lead-time required.
- Convenient spool format simplifies and speeds handling & transport.
- Adhesive backing enables easy installation.
- Faster, less complicated shimming tape technique for larger deviations.
- Reduces inventory costs.

Reliable and long-term seal

- Barrier core creates a tight seal that impedes even highly-permeating media.
- Provides chemical protection across the full flange width (100% ePTFE).
- Tape is engineered to resist creep and clamp force loss.
- Allows full use of specification range of the glass-lined steel equipment.
- Enables longer maintenance cycles, as demanded by leading chemical producers.

The Gore Sealant Technologies Quality Management System is certified in accordance with ISO 9001.

Endorsed by



Ask for De Dietrich expertise to help install your sealing system and take advantage of the know-how available from a leading glass-lined steel manufacturer.

For more information, please visit www.dedietrich.com/en/S1000 or contact one of the following offices:

Europe/Middle East/Russia/Africa/Asia

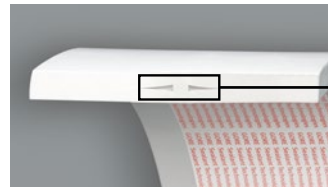
De Dietrich Process Systems (France)
Tel.: +33 3 88 53 23 85
E-mail: aftersales@dedietrich.com

China

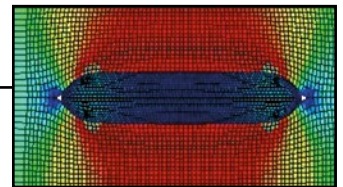
De Dietrich Process Systems (China)
Tel.: +86 21 6390 0772
E-mail: jingyan.sun@dedietrichchina.com

North America/South America

De Dietrich Process Systems Inc. (USA)
Tel.: +1 908 317 2585
Web: www.ddpsinc.com/S1000



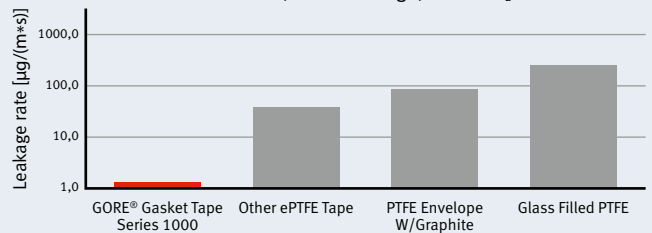
Cross section of GORE® Gasket Tape Series 1000



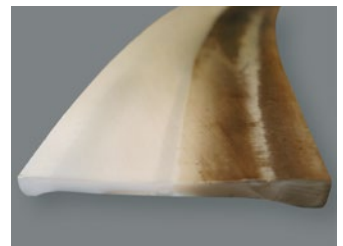
Finite Element Analysis (FEA) model. Red indicates optimal sealing stress.

Leakage rate on a 0.5 mm deviation

20 MPa, DN200 flange, 10 bar N₂

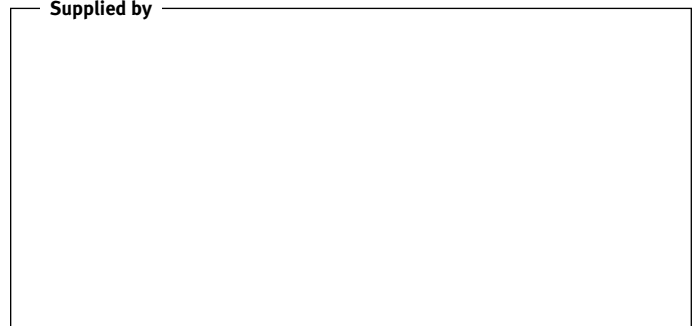


Installation of GORE® Gasket Tape Series 1000



Cross section of GORE® Gasket Tape Series 1000 after service in challenging process conditions

Supplied by



FOR INDUSTRIAL USE ONLY. Not for use in food, drug, cosmetic or medical device manufacturing, processing, or packaging operations.

All technical information and advice given here is based on Gore's previous experiences and/or test results. Gore gives this information to the best of its knowledge, but assumes no legal responsibility. Customers are asked to check the suitability and usability in the specific application, since the performance of the product can only be judged when all necessary operating data are available. The above information is subject to change and is not to be used for specification purposes.

Gore's terms and conditions of sale apply to the sale of the products by Gore.

GORE and designs are trademarks of W. L. Gore & Associates.

© 2015 W. L. Gore & Associates GmbH

gore.com/sealants

